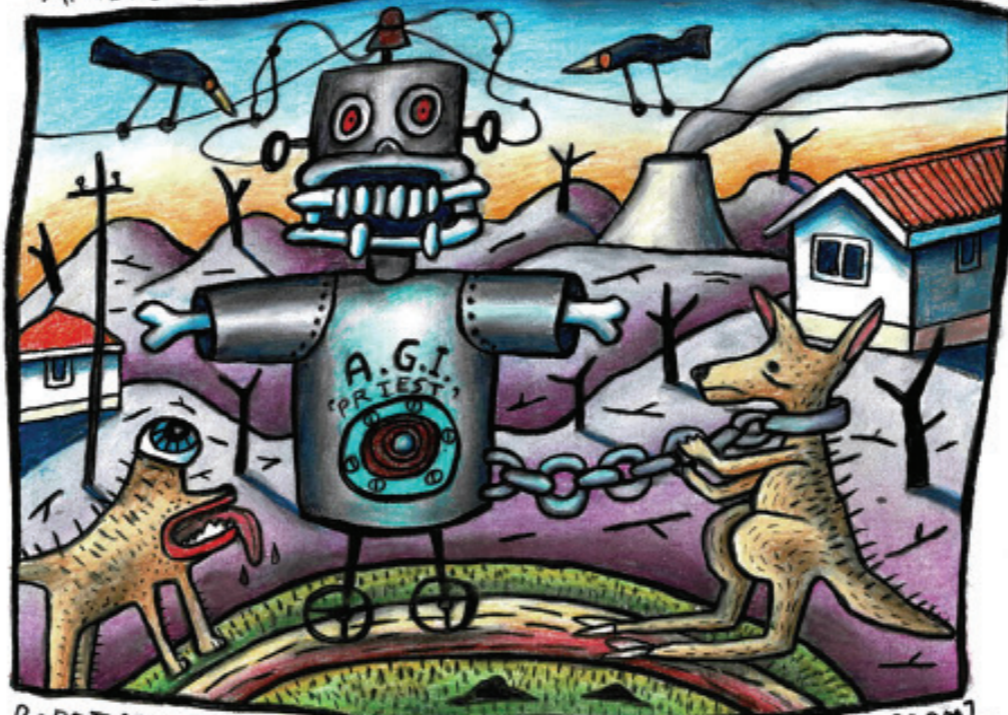




Robot riding a horse.

Reg Mombassa

ARTIFICIAL GENERAL INTELLIGENCE: ROBOT SMALLTALK



ROBOT 'PRIEST' with captured Australian, Hunter Valley. Reg M.

Above  
Artificial General Intelligence:  
Robot Smalltalk  
2019  
Charcoal and coloured pencil  
on paper  
32 x 25cm

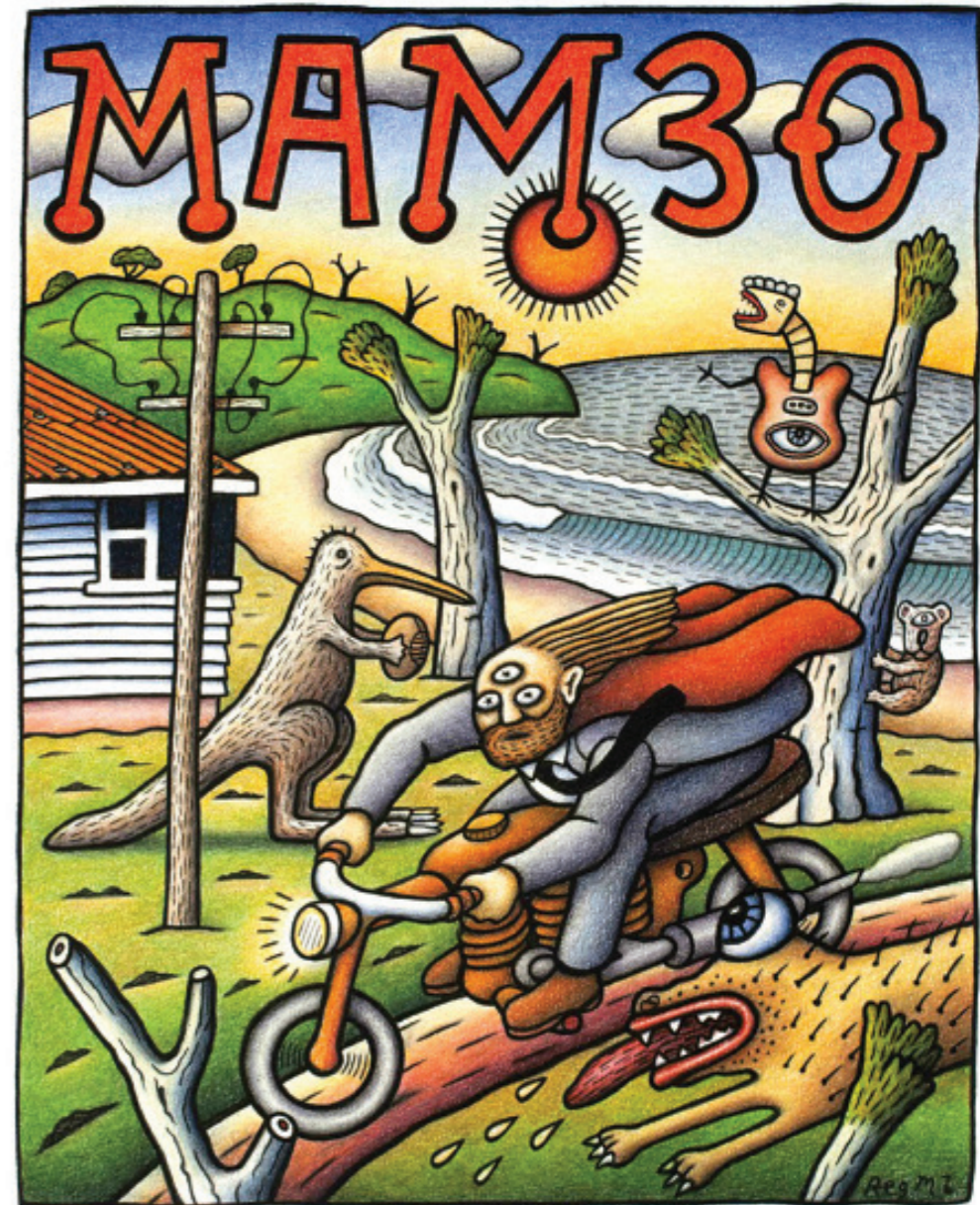
Right  
Robot on a rearing horse, BlueLand  
2019  
Charcoal and coloured pencil  
on paper  
52 x 35cm

Cover  
Mambo 30  
2014 Digital  
reproduction framed  
35 x 28cm

Left  
Robot riding a horse  
2019  
Charcoal and coloured  
pencil on paper  
37 x 51cm



ROBOT ON A REARING HORSE (BLUELAND) Reg Mombassa



30 YEARS OF SHELF-INDULGENCE

**THE CLAYTON UTZ  
ART PARTNERSHIP**

CLAYTON UTZ



- Image courtesy of Tony Lopes

## REG MOMBASSA

Christopher O'Doherty, also known as Reg Mombassa, is an Australian musician and artist. He is known for his membership in bands Mental as Anything, Dog Trumpet and The Pinks. He worked with Mambo Graphics designing T-shirts and posters since 1986 and exhibited paintings, drawings and prints at Watters Gallery from 1975 to 2018.

Beneath the humour in his work lies the expression of serious insights and sympathies. O'Doherty's oeuvre is shaped from allegorical landscapes that create lingering, enigmatic sensations to both invite and unsettle his audience. His depictions of the familiar Australian landscape are imbued with an atmosphere of the immaterial to build a soft pulsing anticipation and gnawing stillness within his work. In the words of Australian art historian Chris McAuliffe, "In O'Doherty's hands, every horizon hides an unreachable place where we long to be, every hillside implies an opposing slope that we'll never know".

His diverse range of projects also includes taking part in solo and group art shows in Australia, New Zealand, Italy, USA, France, Britain, China and Thailand. He has had a survey show at the S.H. Ervin gallery in 2007 and Manly Gallery and

Museum in 2018 with his brother Peter O'Doherty. His designs were featured in the Closing Ceremony of the Sydney Olympic Games in 2000, and he designed the graphics for the 2013 Sydney New Year's Eve celebrations. In 2001 the Victorian Tapestry Workshop invited Reg to contribute a design for a 2 metre square section of a 43.5 metre long Federation Tapestry to be completed and installed in the Melbourne Museum. Subsequently they made 4 more tapestries based on his designs, which were unveiled at the Tapestry Workshop Gallery in Melbourne in 2002. Additionally in 2002 Reg was selected by the Melbourne based Visible Art Foundation to have 3 of his works very enlarged to make an installation on the outside of the Republic Tower building in Collins Street, Melbourne.

A biography *The Life and Times of Reg Mombassa* was written by Murray Waldren and published by Harper Collins in 2009. *The Landscapes of Reg Mombassa* was published by P.Q. Blackwell in 2016.

Artworks courtesy of Reg Mombassa



Above  
*Australian Jesus welcomes the Boat People*  
2004  
Charcoal and coloured pencil on paper  
38 x 29cm



Left  
*Replacing a differential, South Western NSW*  
2001  
Charcoal and coloured pencil on paper  
45 x 52cm

### The Clayton Utz Art Partnership

The Clayton Utz Art Partnership brings together a unique collaboration between two outstanding Australian artists and our firm.

Each exhibition presents an opportunity to showcase the work of two contemporary artists in the offices of Clayton Utz. Our exhibition space offers a unique visual art experience for clients to get up-close and personal with an amazing array of artwork.

In our fifth Sydney exhibition we're excited to be featuring artworks by two internationally acclaimed artists Christopher O'Doherty, also known as Reg Mombassa and David Griggs. Amongst his broad practice, Reg is well known for the iconic designs of the famous Mambo clothing brand. Griggs is famous for his bold, anarchistic paintings and exhibiting in international museums such as the Palais de Tokyo, Paris 2019.

The uniquely curated program allows both artists to explore and display their work in one of Australia's leading corporate environments. Guests visiting the exhibition will have an opportunity to explore the artwork in an intimate and innovative environment. Complementing the exhibition the Art Partnership creates opportunities for both artists, Clayton Utz employees and our clients to collaborate and explore the creative process.

The Clayton Utz Art Partnership is a truly exciting initiative and demonstrates our pride as an Australian firm committed to the cultural sector, and the broader creative communities in which we live and work. We hope you enjoy being part of it.

Development & Curatorial Partner  
(For Enquiries)  
info@333artprojects.com

3:33  
art projects

CLAYTON UTZ